

**Motic®**

# The Education Line from Motic

*Motic's complete line of education microscopes provides a wide range of models with various features that will fit in all requirements.*

*With the LED illumination getting popular, more models are now built in with this perfect illumination system.*

**Motic®**



**Motic®**

[www.motic.com](http://www.motic.com)

**Motic Incorporation Ltd. (HONG KONG)**

Rm 2907-B, Windsor House, 311 Gloucester Road, Causeway Bay, Hong Kong  
Tel: 852-2837 0888 Fax: 852-2882 2792

**Motic Instruments Inc. (CANADA)**

180-4320 Viking Way Richmond, B.C. V6V 2L4 Canada  
Tel: 1-877-977 4717 Fax: 1-604-303 9043

**For Inquiries in UK (UK)**

Saracens House, 25 St. Margarets Green, Ipswich, IP4 2BN, Suffolk, UK  
Tel: 44-(0)-14732 81909 Fax: 44-(0)-14732 11508

**Motic Deutschland GmbH (GERMANY)**

Gewerbepark Spillburg, Spillburgstrasse 1 D-35578 Wetzlar Germany  
Tel: 49-6441-210 010 Fax: 49-6441-210 0122

**Motic Spain, S.L. (SPAIN)**

Poligon Industrial Les Corts, Camí del Mig, 112 08349 Cabrera de Mar Barcelona - Spain  
Tel: 34-93-756 6286 Fax: 34-93-756 6287

Motic Incorporation Ltd. Copyright © 2002-2004, 2006. All Rights Reserved

**Design Change:** The manufacturer reserves the right to make changes in instrument design in accordance with scientific and mechanical progress, without notice and without obligation.

CE



Code No: SP010219B

*More Than Microscopy*

## PS-2 simple basic biological microscopes



### Model PS-2

Huygens eyepiece H10X  
Magnification: 27X



## F-11 series basic biological microscopes

A complete series of LED microscopes with different configurations

Why choosing Motic LED illumination:-

- LED light provides a NO-HEAT illumination eliminating heat problems generated from the traditional light bulbs, especially important for incident light of stereo microscopes
- Low-voltage operation ensure maximum safety for classrooms
- Auto cut-off function on all LED circuits ensure batteries will not be over-charged
- Long-life of LED bulbs (5,000-10,000 hours) enhances frequent use of the microscopes
- Motic carefully select of LED bulbs with exact colour temperature for maximum comfort of viewing
- Cordless models features a rechargeable battery concept for a hassle free operation
- Careful calculation on the optics to ensure perfect optical performances



### Model F1110-Cordled LED

Monocular head, inclined 45° and 360° rotating  
Widefield eyepiece WF10X / 18mm  
Quadruple nosepiece  
Achromatic objectives DIN 4X, 10X, 40X S  
Separate coarse and fine focusing adjustment  
Built in 0.65 N.A. condenser on stage  
Iris diaphragm, with filter holder  
LED illumination 20mA, 3.5V, 70mW with intensity control  
Main supply 220V-240V, VDE plug, CE  
Plug-in Power Cord

### Model F1115-Cordled LED

Monocular head, inclined 45° and 360° rotating  
Widefield eyepiece WF10X / 18mm  
Quadruple nosepiece  
Achromatic objectives DIN 4X, 10X, 40X S  
Separate coarse and fine focusing adjustment  
Focusable 1.25 N.A. Abbe condenser  
Iris diaphragm, with filter holder  
LED illumination 20mA, 3.5V, 70mW with intensity control  
Main supply 220V-240V, VDE plug, CE  
Plug-in Power Cord



### Model F1125-Cordled LED

Dual view head  
Widefield eyepiece WF10X / 18mm (2 pieces)  
Quadruple nosepiece  
Achromatic objectives DIN 4X, 10X, 40X S  
Separate coarse and fine focusing adjustment  
Focusable 1.25 N.A. Abbe condenser  
Iris diaphragm with filter holder  
LED illumination 20mA, 3.5V, 70mW with intensity control  
Main supply 220V-240V, VDE plug, CE  
Plug-in Power Cord



## OPTIONAL ACCESSORIES

### Eyepieces (per piece)

Huygens eyepiece H5X / 14.5mm  
Widefield eyepiece WF10X / 18mm  
Widefield eyepiece WF15X / 12mm  
Huygens eyepiece H15X / 8mm

### Micrometer eyepieces (per piece)

Micrometer eyepiece WF10X / 18mm, 100 divisions in 10mm  
Reticle 19mm (for 18mm eyepiece), 100 divisions in 10mm  
Reticle holder

### Achromatic objectives

Achromatic objective 4X / 0.10  
Achromatic objective 10X / 0.25  
Achromatic objective 20X / 0.40  
Achromatic objective 40X / 0.65 / S  
Achromatic objective 60X / 0.85 / S  
Achromatic objective 100X / 1.25 / S - Oil

### Photo and CCD Adapters

Photo adapter  
CCD adapter

### Spare parts

Mechanical stage MSH-008  
Blue filter  
Dust cover (size B)  
Plastic carrying case  
Aluminium box

### Spare bulbs

LED 20mA, 3.5V, 70mW



Eyepieces



Photo and CCD Adapters

# Motic 18/28 series biological microscopes

The EA objectives provide super optical performance of this very unique design microscope series. Now all 18 and 28 series come in with standard LED illumination (rechargeable version), which is now well acceptable, and being asked by many users.



## ● Model 1801-LED

Monocular head, inclined 45° and 360° rotating  
Widefield eyepiece WF10X / 18mm  
Quadruple nosepiece  
Achromatic objectives EA 4X, 10X, 40X S  
Separate fine and coarse focusing adjustment  
0.65 N.A. condenser built in on stage  
Iris diaphragm with filter holder  
LED illumination 20mA, 3.5V, 70mW with intensity control  
Main supply 220V-240V, VDE plug, charger included (CE)



## ● Model 1802-LED

Monocular head, inclined 45° and 360° rotating  
Widefield eyepiece WF10X / 18mm  
Quadruple nosepiece  
Achromatic objectives EA 4X, 10X, 40X S  
Separate fine and coarse focusing adjustment  
Built in low position coaxial mechanical stage  
Focusable 1.25 N.A. Abbe condenser  
Iris diaphragm with filter holder  
LED illumination 20mA, 3.5V, 70mW with intensity control  
Main supply 220V-240V, charger included (CE)

## ● Model 1820-LED

Monocular head, inclined 45° and 360° rotating  
Widefield eyepiece WF10X / 18mm  
Quadruple nosepiece  
Achromatic objectives EA 4X, 10X, 40X S  
Separate fine and coarse focusing adjustment  
Built in low position coaxial mechanical stage  
Focusable 1.25 N.A. Abbe condenser  
Iris diaphragm with filter holder  
LED illumination 20mA, 3.5V, 70mW with intensity control  
Main supply 220V-240V, VDE plug, charger included (CE)



## ● Model 2801-LED

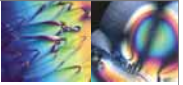
Monocular head, inclined 45° and 360° rotating  
Widefield eyepiece WF10X / 18mm  
Quadruple nosepiece  
Achromatic objectives EA 4X, 10X, 40X S  
Coaxial coarse and fine focusing adjustment  
Rack & pinion focusable 1.25 N.A. Abbe condenser  
Iris diaphragm with filter holder  
LED illumination 20mA, 3.5V, 70mW with intensity control  
Main supply 220V-240V, VDE plug, CE



## ● Model 2802-LED

Monocular head, inclined 45° and 360° rotating  
Widefield eyepiece WF10X / 18mm  
Quadruple nosepiece  
Achromatic objectives EA 4X, 10X, 40X S  
Coaxial coarse and fine focusing adjustment  
Built in low position coaxial mechanical stage  
Rack & pinion focusable 1.25 N.A. Abbe condenser  
Iris diaphragm with filter holder  
LED illumination 20mA, 3.5V, 70mW with intensity control





## PM series petrographic microscopes

Motic PM petrographic microscopes are specially designed for education use. The models are carefully considered with features required for their intended applications.



### ● Model 2820-LED

Binocular head, inclined 45° and 360° rotating  
Widefield eyepieces WF10X / 18mm  
Quadruple nosepiece  
Achromatic objective EA 4X, 10X, 40X S  
Coaxial coarse and fine focusing adjustment  
Built in low position coaxial mechanical stage  
Rack & pinion focusable 1.25 N.A. Abbe condenser  
Iris diaphragm with filter holder  
LED illumination 20mA, 3.5V, 70mW with intensity control  
Main supply 220V-240V, VDE plug, CE

### OPTIONAL ACCESSORIES

#### Eyepieces (per piece)

Huygens eyepieces H5X / 14.5mm  
Widefield eyepieces WF10X / 18mm  
Widefield eyepieces WF15X / 12mm

#### Micrometer eyepieces (per piece)

Micrometer eyepiece WF10X / 18mm,  
100 divisions in 10mm  
Reticle 19mm (for 18mm eyepiece),  
100 divisions in 10mm  
Reticle holder

#### Achromatic objectives - EA

Achromatic objective 4X / 0.10  
Achromatic objective 10X / 0.25  
Achromatic objective 20X / 0.40  
Achromatic objective 40X / 0.65 / S  
Achromatic objective 60X / 0.85 / S  
Achromatic objective 100X / 1.25 / S-Oil

#### Spare parts

Blue filter  
Dust cover (size B)  
Aluminium box

#### Spare bulbs

LED 20mA, 2.5V, 70mW



Micrometer eyepieces



Achromatic objectives - EA

### ● Model PM-1805

Monocular head, inclined 45° and 360° rotating  
Widefield eyepieces WF10X / 18mm (plain cross hair)  
Quadruple nosepiece  
Achromatic objectives EA 4X, 10X, 40X S  
Separate fine and coarse focusing adjustment  
Working table rotating from 0° - 360° with graduation to 1°  
Focusable 1.25 N.A. Abbe condenser  
Iris diaphragm with filter holder  
Halogen illumination 12V / 20W with intensity control  
Main supply 220V-240V, VDE plug, CE  
With simple add on type analyser and polarizer

### ● Model PM-2805

Monocular head, inclined 45° and 360° rotating  
Widefield eyepieces WF10X / 18mm (plain cross hair)  
Quadruple nosepiece  
Achromatic objectives EA 4X, 10X, 40X S  
Slide in analyser provides choice of 1/4  $\lambda$  plate or  $\lambda$  plate and bertrand lens  
Coaxial coarse and fine focusing adjustment  
Working table rotating from 0° - 360° with graduation to 1°  
Focusable 1.25 N.A. Abbe condenser  
Iris diaphragm with filter holder  
Halogen illumination 12V / 20W with intensity control  
Main supply 220V-240V, VDE plug, CE



### OPTIONAL ACCESSORIES

#### Eyepieces (per piece)

Huygens eyepiece H5X / 14.5mm  
Widefield eyepiece WF10X / 18mm  
Widefield eyepiece WF15X / 12mm

#### Micrometer eyepieces (per piece)

Micrometer eyepiece WF10X / 18mm,  
100 divisions in 10mm  
Widefield eyepiece WF10X / 18mm (cross reticle)  
Reticle 19mm (for 18mm eyepiece),  
100 divisions in 10mm  
Cross reticle 19mm (for 18mm eyepiece)  
Reticle holder

#### Achromatic objectives - EA

Achromatic objective 4X / 0.10  
Achromatic objective 10X / 0.25  
Achromatic objective 20X / 0.40  
Achromatic objective 40X / 0.65 / S  
Achromatic objective 60X / 0.85 / S

#### Spare parts

Blue filter  
Dust cover (size B)  
Aluminium box

#### Spare bulbs

Halogen bulb 12V / 20W



Eyepieces (per piece)

# Model B1 series biological microscopes



## ● Model B1-211A

Monocular head, inclined 45° and 360° rotating  
Widefield eyepiece WF10X / 18mm  
Quadruple nosepiece  
Plan objective PL 4X  
Achromatic objectives A 10X, 40X S, 100X S-Oil  
Coaxial coarse and fine focusing adjustment  
Built in low position coaxial mechanical stage  
Focusable 1.25 N.A. Abbe condenser  
Iris diaphragm with filter holder  
Halogen illumination 12V / 20W with intensity control  
Main supply 220V-240V, VDE plug, CE



## ● Model B1-220A

Binocular head, inclined 45° and 360° rotating  
Widefield eyepieces WF10X / 18mm  
Quadruple nosepiece  
Plan objective PL 4X  
Achromatic objectives A 10X, 40X S, 100X S-Oil  
Coaxial coarse and fine focusing adjustment  
Built in low position coaxial mechanical stage  
Focusable 1.25 N.A. Abbe condenser  
Iris diaphragm with filter holder  
Halogen illumination 12V / 20W with intensity control  
Main supply 220V-240V, VDE plug, CE



## ● Model B1-223A

Trinocular head 30° inclined, 360° rotating  
Widefield eyepieces WF10X / 18mm  
Quadruple nosepiece  
Plan objective PL 4X  
Achromatic objectives A 10X, 40X S, 100X S-Oil  
Coaxial coarse and fine focusing adjustment  
Built in low position coaxial mechanical stage  
Focusable 1.25 N.A. Abbe condenser  
Iris diaphragm with filter holder  
Halogen illumination 12V / 20W with intensity control  
Main supply 220V-240V, VDE plug, CE

## ● Model B1-220ASC

Binocular head inclined 45° and 360° rotating  
Widefield eyepieces WF10X / 20mm  
Quadruple nosepiece  
Achromatic Super Contrast objectives ASC 4X, 10X, 40X S, 100X S-Oil  
Coaxial coarse and fine focusing adjustment  
Built in low position coaxial mechanical stage  
Focusable 1.25 N.A. Abbe condenser  
Iris diaphragm with filter holder  
Halogen illumination 12V / 20W with intensity control  
Main supply 220V-240V, VDE plug, CE



## ● Model B1-223ASC

Trinocular head inclined 30° and 360° rotating  
Widefield eyepieces WF10X / 20mm  
Quadruple nosepiece  
Achromatic Super Contrast objectives ASC 4X, 10X, 40X S, 100X S-Oil  
Coaxial coarse and fine focusing adjustment  
Built in low position coaxial mechanical stage  
Focusable 1.25 N.A. Abbe condenser  
Iris diaphragm with filter holder  
Halogen illumination 12V / 20W with intensity control  
Main supply 220V-240V, VDE plug, CE



## OPTIONAL ACCESSORIES

### Eyepieces (per piece)

Huygens eyepiece H5X / 14.5mm  
Widefield eyepiece WF10X / 18mm  
Widefield eyepiece WF10X / 20mm  
Widefield eyepiece WF15X / 12mm  
Widefield eyepiece WF20X / 11mm

### Micrometer eyepieces (per piece)

Micrometer eyepiece WF10X / 18mm, 100 divisions in 10mm  
Reticle 19mm (for 18mm eyepiece), 100 divisions in 10mm  
Reticle holder

### Achromatic Objectives - A

Plan achromatic objective PL 4X / 0.10  
Achromatic objective A 10X / 0.25  
Achromatic objective A 20X / 0.40  
Achromatic objective A 40X / 0.65 / S  
Achromatic objective A 60X / 0.85 / S  
Achromatic objective A 100X / 1.25 / S - Oil

### Achromatic Super Contrast Objectives - ASC

Achromatic Super Contrast objective ASC 4X / 0.10  
Achromatic Super Contrast objective ASC 10X / 0.25  
Achromatic Super Contrast objective ASC 40X / 0.65 / S  
Achromatic Super Contrast objective ASC 100X / 1.25 / S-Oil

### Plan Phase Objective - PL PH

Plan phase objective PL PH 10X / 0.25  
Plan phase objective PL PH 40X / 0.65 / S

### Polarizing Set

Polarizing set B.208  
Polarizing set B.208NT (without rotating table)

### Phase Contrast and Darkfield Accessories

10X phase contrast attachment (simple plug in type)  
40X phase contrast attachment (simple plug in type)  
Centering telescope  
Darkfield attachment (simple plug in type)

### Photo and C-Mount Camera Adapters

2.5X SLR Projection lens  
4X SLR Projection lens  
0.5X C-mount camera adapter for 1/2" chip sensors  
1X C-mount camera adapter [no lens]

### Spare parts

Blue filter  
Green filter  
Yellow filter  
Eyecups (pair)  
Dust cover (size C)  
Mirror and fork attachment  
Aluminium box

### Spare bulbs

Halogen bulb 12V / 20W

# B3 series professional biological microscopes

The B3 series offers a full series of research type microscopes with the top quality and unbeatable prices.



## Model B3-220ASC

Binocular head siedentopf type inclined 30° and 360° rotating  
Widefield eyepieces WF10X / 20mm  
Reversed quintuple nosepiece  
Achromatic Super Contrast objectives ASC 4X, 10X, 40X S, 100X S-Oil  
Coaxial coarse and fine focusing adjustment  
Built in low position coaxial mechanical stage  
Focusable 1.25 N.A. Abbe condenser  
Iris diaphragm with filter holder  
Koehler illumination halogen 12V / 20W with intensity control  
Main supply 220V-240V, VDE plug, CE



## Model B3-223ASC

Trinocular head siedentopf type inclined 30° and 360° rotating  
Widefield eyepieces WF10X / 20mm  
Reversed quintuple nosepiece  
Achromatic Super Contrast objectives ASC 4X, 10X, 40X S, 100X S-Oil  
Coaxial coarse and fine focusing adjustment  
Built in low position coaxial mechanical stage  
Focusable 1.25 N.A. Abbe condenser  
Iris diaphragm with filter holder  
Koehler illumination halogen 12V / 20W with intensity control  
Main supply 220V-240V, VDE plug, CE



## Model B3-220PL

Binocular head siedentopf type inclined 30° and 360° rotating  
Widefield eyepieces WF10X / 20mm  
Reversed quintuple nosepiece  
Plan objectives PL 4X, 10X, 40X S, 100X S-Oil  
Coaxial coarse and fine focusing adjustment  
Built in low position coaxial mechanical stage  
Focusable 1.25 N.A. Abbe condenser  
Iris diaphragm with filter holder  
Koehler illumination halogen 12V / 20W with intensity control  
Main supply 220V-240V, VDE plug, CE

## Model B3-223PL

Trinocular head siedentopf type inclined 30° and 360° rotating  
Widefield eyepieces WF10X / 20mm  
Reversed quintuple nosepiece  
Plan objectives PL 4X, 10X, 40X S, 100X S-Oil  
Coaxial coarse and fine focusing adjustment  
Built in low position coaxial mechanical stage  
Focusable 1.25 N.A. Abbe condenser  
Iris diaphragm with filter holder  
Koehler illumination halogen 12V / 20W with intensity control  
Main supply 220V-240V, VDE plug, CE  
\*Note: Photo and C-mount camera adapters not included



## OPTIONAL ACCESSORIES

### Eyepieces (per piece)

Huygens eyepiece H5X / 14.5mm  
Widefield eyepiece WF10X / 18mm  
Widefield eyepiece WF10X / 20mm  
Widefield eyepiece WF15X / 12mm  
Widefield eyepiece WF20X / 11mm

### Micrometer eyepieces (per piece)

Micrometer eyepiece 10X / 18mm, 100 divisions in 10mm  
Reticle 19mm (for 18mm eyepiece), 100 divisions in 10mm  
Reticle holder

### Achromatic Super Contrast Objectives - ASC

Achromatic Super Contrast objective ASC 4X / 0.10  
Achromatic Super Contrast objective ASC 10X / 0.25  
Achromatic Super Contrast objective ASC 40X / 0.65 / S  
Achromatic Super Contrast objective ASC 100X / 1.25 / S-Oil

### Plan Objectives - PL

Plan objective PL 4X / 0.10  
Plan objective PL 10X / 0.25  
Plan objective PL 20X / 0.40  
Plan objective PL 40X / 0.65 / S  
Plan objective PL 60X / 0.85 / S  
Plan objective PL 100X / 1.25 / S - Oil

### Plan Phase Objective - PL PH

Plan phase objective PL PH 10X / 0.25  
Plan phase objective PL PH 40X / 0.65 / S  
Plan phase objective PL PH 100X / 1.25 / S-Oil

### Polarizing set

Polarizing set B.209

### Phase Contrast and Darkfield Accessories

10X phase contrast attachment (simple plug in type)  
40X phase contrast attachment (simple plug in type)  
Centering telescope  
Special 5-hole turret type Abbe condenser 1.25 N.A. with choices for phase contrast 10X, 20X, 40X, 100X and brightfield  
Complete phase contrast set including:  
Plan objectives PLPH 10X, 20X, 40X S and 100X S-Oil, turret type Abbe condenser 1.25 N.A. and centering telescope  
Darkfield attachment (simple plug in type)

### Photo and C-Mount Camera Adapters

2.5X SLR Projection lens  
4X SLR Projection lens  
0.5X C-mount camera adapter for 1/2" chip sensors

### Spare Parts

Blue filter (ø 45mm)  
Green filter (ø 45mm)  
Yellow filter (ø 45mm)  
Frosted filter (ø 45mm)  
Eyecups (pair)  
Dust cover (size C)  
Aluminium box

### Spare bulbs

Halogen bulb 12V / 20W

## ST-39 series stereo microscopes



## SFC-11 series microscopes



### ● Model ST-39C-N9GO

45° Binocular head, 360° rotating  
Widefield eyepieces WF10X / 20mm  
Objective turret magnification changer [2X, 4X]  
Incident halogen light 12V / 10W  
Transmitted tungsten light 12V / 10W  
Main supply 220V-240V, VDE plug, CE



### ● Model ST-39Z-N9GO

45° Binocular head, 360° rotating  
Widefield eyepieces WF10X / 20mm  
3:1 zoom ratio; magnification range: 1X-3X  
Incident halogen light 12V / 10W  
Transmitted halogen light 12V / 10W  
Main supply 220V-240V, VDE plug, CE

## OPTIONAL ACCESSORIES

### Eyepieces (per piece)

Widefield WF 5X / F.N.22  
Widefield WF 10X / F.N.20  
Widefield WF 15X / F.N.13  
Widefield WF 20X / F.N.10  
Widefield WF 30X / F.N.8

### Micrometer eyepiece (per piece)

Graduated linear line and double cross hair,  
point=0.1mm/10mm

### Polarising Equipments

B.301: Polarising equipment [1-piece rotary]  
Jewellery clamp

### Darkfield Equipments

Darkfield condenser with iris diaphragm

### Spare parts

White stage plate, ø 80mm  
Black stage plate, ø 80mm  
Frosted stage plate, ø 80mm  
Dust cover (size B)  
Eyecups (pair)

### Spare Bulbs

12V / 10W Halogen replacement bulb for incident illumination  
12V / 10W Tungsten replacement bulb for transmitted illumination



Eyepieces (per piece)

### ● Model SFC-11A-2LBB

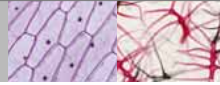
45° Binocular head, 360° rotating  
Widefield eyepieces 10X / F.N.20  
Objective turret magnification changer  
Objective turret type A [1X, 2X]  
95mm working distance  
2LBB: Fixed incident and transmitted illumination stand  
12V/10W Tungsten incident and transmitted illumination  
Main supply 220V-240V, VDE plug, CE



### ● Model SFC-11B-2LBB

45° Binocular head, 360° rotating  
Widefield eyepieces 10X / F.N.20  
Objective turret magnification changer  
Objective turret type B [1X, 3X]  
95mm working distance  
2LBB: Fixed incident and transmitted illumination stand  
12V/10W Tungsten incident and transmitted illumination  
Main supply 220V-240V, VDE plug, CE





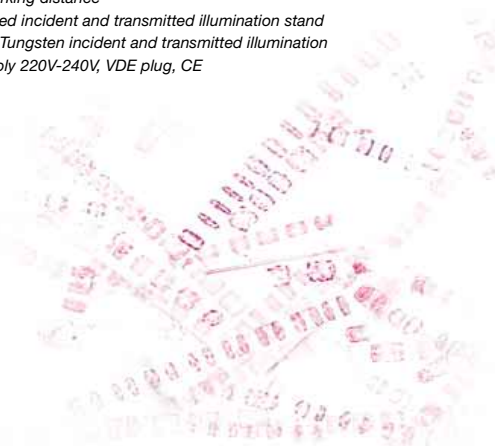
## SMZ-140/143 zoom series stereo microscopes

Motic SMZ-140 series advanced stereo zoom microscopes  
To complete the line of stereomicroscopes, two basic models from Motic SMZ-140 zoom series is now included into the education program. This series offers top class stereo optics with zoom range 1:4 completed with top and bottom halogen illumination.



### Model SFC-11C-2LBB

45° Binocular head, 360° rotating  
Widefield eyepieces 10X / F.N.20  
Objective turret magnification changer  
Objective turret type C [2X, 4X]  
95mm working distance  
2LBB: Fixed incident and transmitted illumination stand  
12V/10W Tungsten incident and transmitted illumination  
Main supply 220V-240V, VDE plug, CE



### OPTIONAL ACCESSORIES

#### Eyepieces (per piece)

Widefield WF 5X / F.N.22  
Widefield WF 10X / F.N.20  
Widefield WF 15X / F.N.13  
Widefield WF 20X / F.N.10  
Widefield WF 30X / F.N.8

#### Micrometer eyepieces (per piece)

Graduated linear line and double cross hair,  
point=0.1mm/10mm

#### Polarizing and Darkfield Equipments

Darkfield attachment with iris diaphragm  
B.301: Polarising equipment [1-piece rotary]  
Jewellery clamp

#### Spare parts

Black / White stage plate, ø 80mm  
Frosted glass stage plate, ø 80mm  
Blue filter  
Dust cover (size B)  
Eyecups (pair)  
Aluminium box

#### Spare bulbs

12V / 10W Tungsten replacement bulb for 2LBB



Eyepieces (per piece)

### Model SMZ-140-N2GG

Greenough zoom optical system  
45° Binocular head, 360° rotation  
Widefield eyepieces 10X / F.N.20  
4:1 Zoom ratio, WD = 80mm  
Magnification range: 1X-4X  
N2GG: Compact incident and transmitted illumination stand  
12V / 15W Intensity controlled halogen incident illumination  
12V / 10W Intensity controlled halogen transmitted illumination  
Main supply 220V



### Model SMZ-143-N2GG

Greenough zoom optical system  
45° Trinocular head, 360° rotation  
100:0 [eyetubes], 50:50 [trinocular tube / right eyetube] optical split  
Widefield eyepieces 10X / F.N.20  
4:1 Zoom ratio, WD = 80mm  
Magnification range: 1X-4X  
N2GG: Compact incident and transmitted illumination stand  
12V / 15W Intensity controlled halogen incident illumination  
12V / 10W Intensity controlled halogen transmitted illumination  
Main supply 220V



### OPTIONAL ACCESSORIES

#### Stages and Accessories

1106S: Gliding stage for N2GG stand  
Jewellery clamp

#### Eyepieces (per piece)

Widefield WF 5X / F.N.22  
Widefield WF 10X / F.N.20  
Widefield WF 15X / F.N.13  
Widefield WF 20X / F.N.10  
Widefield WF 30X / F.N.8

#### Micrometer eyepieces (per piece)

Graduated linear line and plain cross hair,  
point=0.1mm/14mm [Widefield 10X/F.N. 20]  
Graduated linear line, point=0.2mm/14mm  
[Widefield 10X/F.N. 20]  
360° Protactor, 30° increments  
[Widefield 10X/F.N. 20]  
Graduated linear line and double cross hair,  
point = 0.1mm / 10mm [widefield 20X / F.N. 10]

#### Objectives (per piece)

0.35X Objective, WD=200mm  
0.5X Objective, WD=133mm  
0.63X Objective, WD=110mm  
0.75X Objective, WD=89mm  
1.5X Objective, WD=33mm

#### Photo and C-Mount Camera Adapters

2X SLR Projection lens  
0.4X C-mount camera adapter for 1/3" chip  
sensors  
0.5X C-mount camera adapter for 1/2" chip  
sensors

#### Polarising Equipment

B301: Polarising equipment [1-piece rotary]  
for N2GG stand

#### Darkfield Equipment

Darkfield attachment with iris diaphragm

#### Spare parts

N2GG / 1104S Black / White stage plate  
[ø 80mm]  
N2GG / 1104S Frosted glass stage plate  
[ø 80mm]  
Blue frosted filter for N2GG stand  
Dust cover for SMZ 140/143  
Eyecups [pair]  
N2GG based aluminium case  
Trinocular port cover [143]

#### Spare bulbs

12V / 15W Halogen replacement bulb for  
incident illumination [N2GG]  
12V / 10W Halogen replacement bulb for  
transmitted illumination [N2GG]